



UIC Report to the GEO-VI Plenary: 17-18 November, 2009

The UIC Co-Chairs

Ellsworth LeDrew, IEEE

Carsten Dettmann, Germany

Gary J. Foley, USA

Jai Parihar, India

Francesco Pignatelli, EC

Thierry Ranchin, France





UIC Objectives

- Address the needs and concerns of a broad range of user communities
- Engage a continuum of users.
- Facilitate linkages and partnerships between ongoing and new GEO partners.





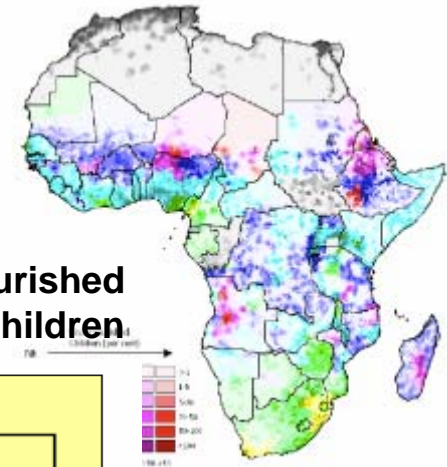
UIC Objectives (continued)

- To oversee and manage:

US-09-01: User Engagement

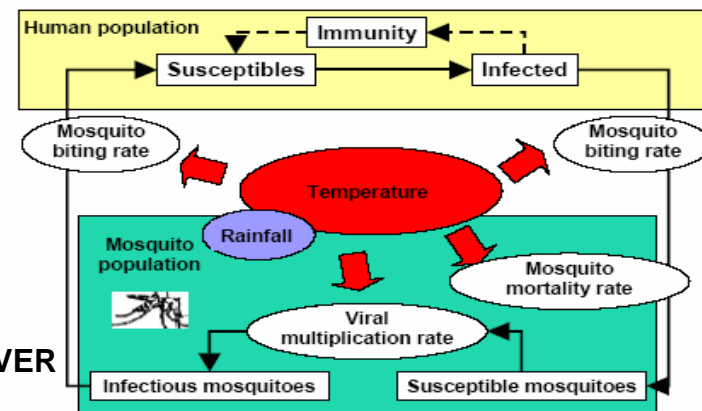


US-09-02: Socio-Economic Indicators



US-09-03: Cross-Cutting Products and Services

CLIMATE AND DENGUE'S FEVER



(after Martens et al., 1995)

UIC Activity Plan



- Formulated in early 2009 for 2009-2010
- Major progress in this plan – a success.
- **Specific Activities:**
 - Support of GEO Work Plan, Targets, and Events
 - GEOSS Applications and Societal Benefits
 - Engagement Strategies
 - *Communities of Practice*
 - *Earth Observations Priorities Project*
 - *Work Plan Analysis*
 - Cross-Committee Collaboration
 - GCI Usability Testing (with ADC)
 - *Call for Proposals on “Earth Observations for Decision Support” (with CBC)*





Highlights

- **Our focus remains on user engagement and increasing participation in targeted regions**

- **User engagement needs improvement** within the GEO tasks
 - UIC has conducted an analysis of the role of the UIC in GEO tasks and has developed a proactive strategy to improve the User engagement role.



Highlights (cont'd)

- The UIC has been working to **acquire and provide feedback** on collaboration, user engagement, Work Plan content, and communication throughout all aspects of GEO.
- The UIC embraces significant activity; indeed **with more activity than it has volunteers at present.**
- The UIC has developed an organized, structured approach to address the **significant user engagement opportunities and expectations within GEO.**



Communities of Practice

- **New Communities of Practice:**
 - Carbon Community of Practice
 - Global Agricultural Monitoring Community of Practice
 - Health and Environment Community of Practice
 - Integrated Global Water Cycle (IGWCO) Community of Practice

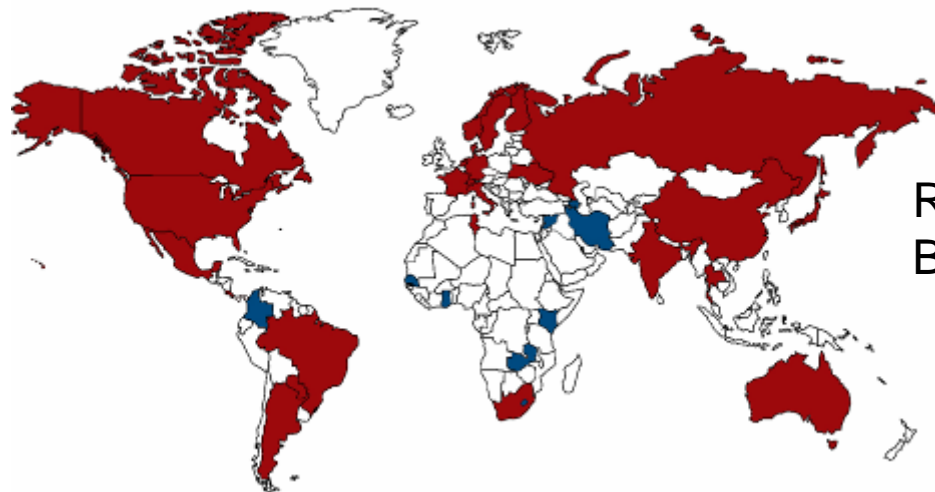
- There are emerging Communities of Practice that include Health and Air Quality



Earth Observations Priorities Project

**Identify critical Earth Observations Priorities
common to many Societal Benefit Areas**

- Analyze existing publically-available documents, published by GEO Members and Participating Organizations from 2000-present, that specify observation needs from the User's perspective.
- Performing a meta-analysis across the available documents .
- Analysts and Advisory Group members originate from various GEO Members and Participating Organizations:



Red: GEO members
Blue: Non-GEO members

Earth Observation Priorities (Task US-09-01a)

*Documents Reviewed & ad hoc Advisory Groups Members, by SBA
(figures as of 4-August-2009)*

GEO Societal Benefit Area	Advisory Group Members	Documents in Meta-Analysis
Agriculture	11	15
Biodiversity	8	55
Climate	7	35
Disasters	13	40
Energy	14	53
Ecosystems	11	71
Human Health: Aeroallergens	16	117
Human Health: Air Quality	10	35
Human Health: Infectious Disease	17	165
Water	9	56
Weather	5	34
<i>Total</i>	<i>121</i>	<i>676</i>



Earth Observations Priorities Project

- Final reports for five SBAs:
 - Climate, Disasters Ecosystems, Energy, and Weather.

- Preliminary reports for four SBAs:
 - Agriculture, Biodiversity, Health, Water.

- Website (<http://sbageotask.larc.nasa.gov>).



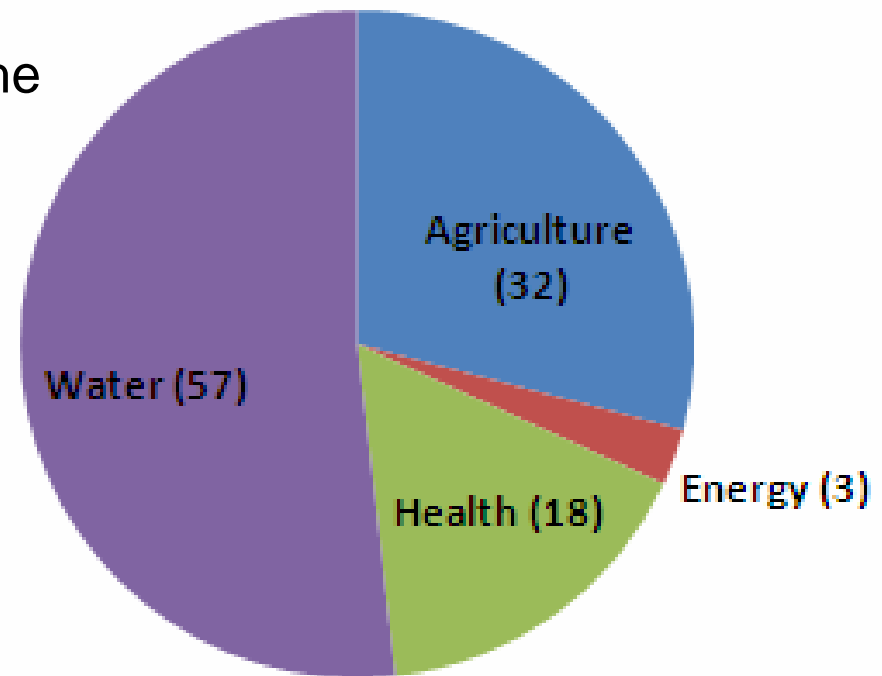
Call for Proposals

In Collaboration with the CBC

“Earth Observations for Decision Support”

- 136 concept proposals received in four invited SBA's
- UIC and CBC have involved the relevant Communities of Practice in the review
- Will broker connections between project teams and resource providing organizations
- **These projects clearly represent activities that will occur *because of GEO.***

Number of Type I/II Concept Proposals



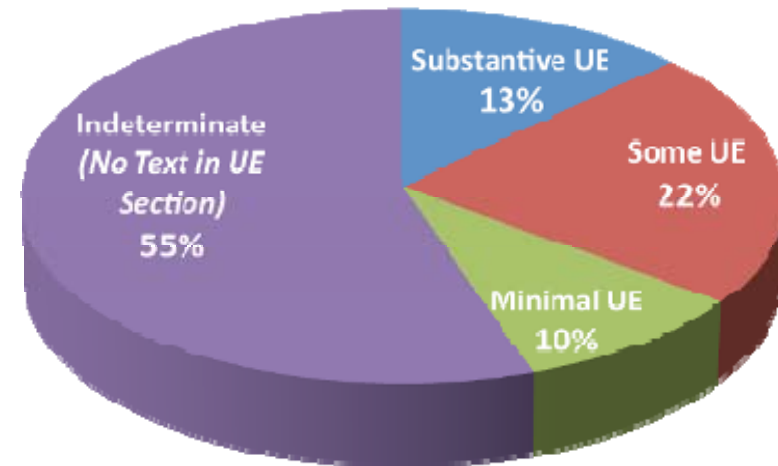


GEO Work Plan Analysis

- Objectives:
 - Assess the user-engagement component in all 114 task sheets
 - Identify opportunities for UIC support to task teams.

- Observations:
 - Need to improve the user-engagement activities in many tasks.
 - Identified 20 tasks of strong interest to the UIC in which the UIC is not currently involved.

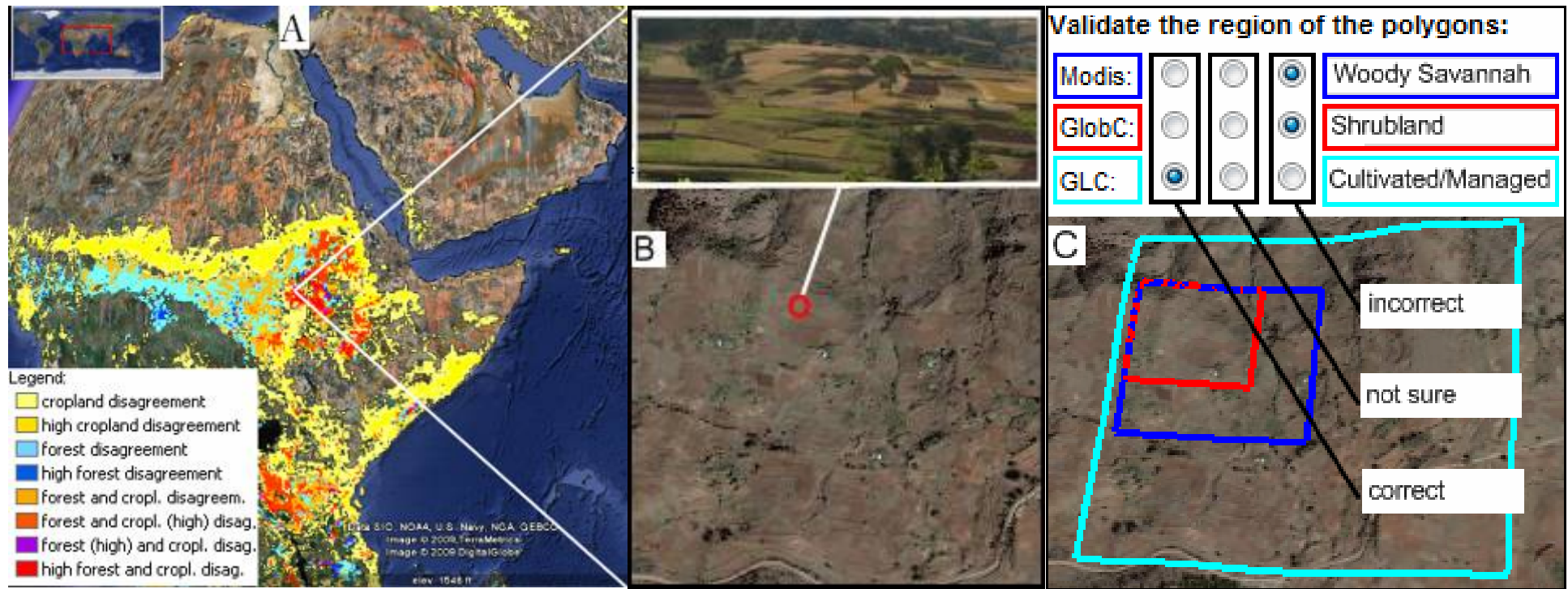
User Engagement (UE) Component of GEO Work Plan Task Sheets, *as of July 2009*





UIC Support from Plenary

- **We need to expand participation within UIC by GEO members. (35 in Monday's meeting)**
 - **By designating points-of-contact, Geo Members :**
 - Contribute to the development and population of the databases for User requirements and Best Practices
 - Achieve increased access to decision makers.
 - Achieve increased participation in demonstration projects
- **Identify and Sponsor participants on CoP and UIC activities from developing countries: Many reports identify participation from developing country scientists and decision makers as critical and not sufficient.**



- (A) The geo-wiki.org – volunteers have the ability to view both cropland and forest disagreement maps derived from three recent global land cover datasets,
- (B) select with the help of Google Earth available high resolution images as well as upload or view geo-tagged pictures (e.g. Panoramio.com, Confluence.org), and
- (C) determine which land cover type is found on the ground and decide which dataset is correct. Results are recorded in a spatial database.