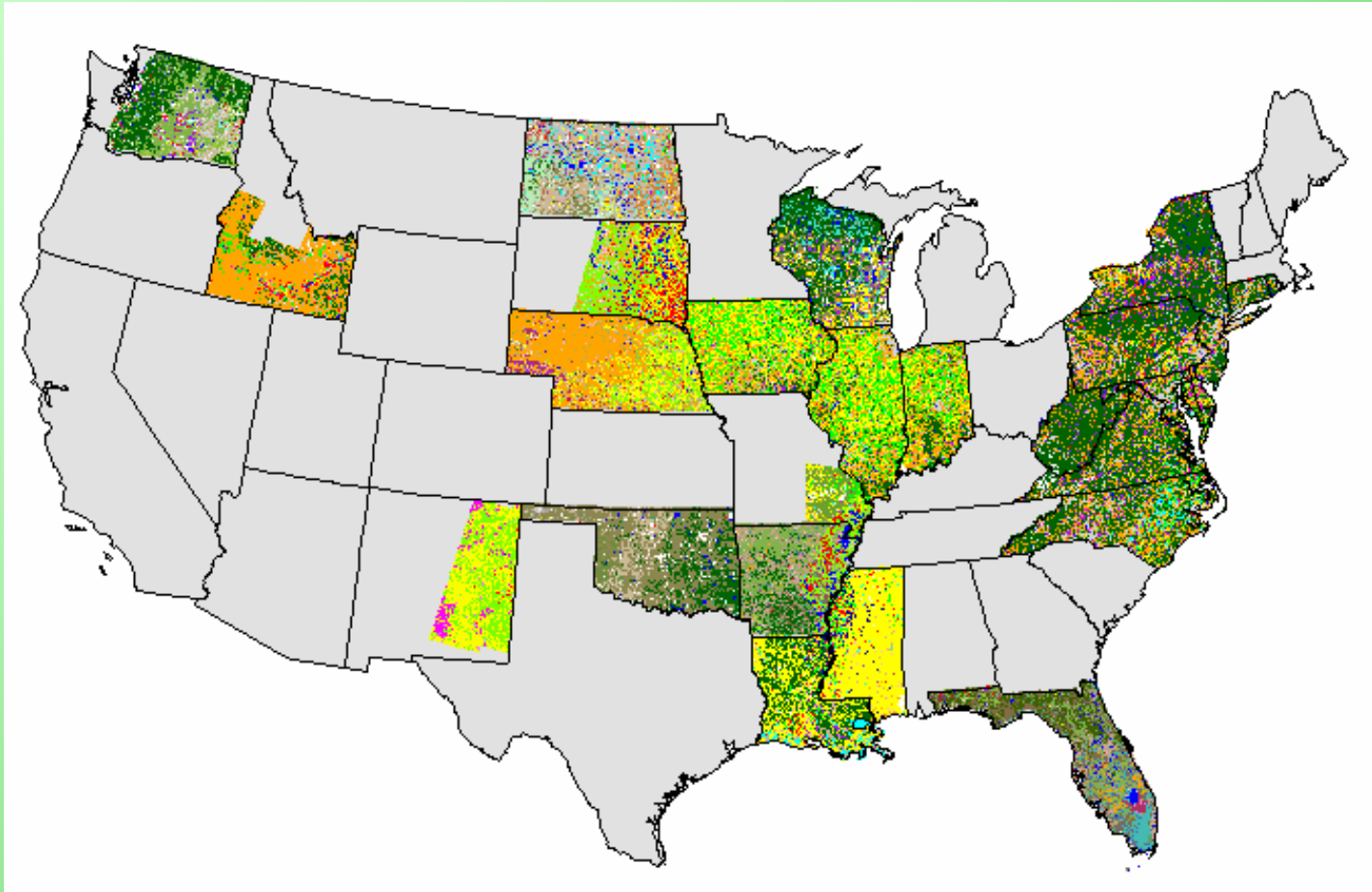
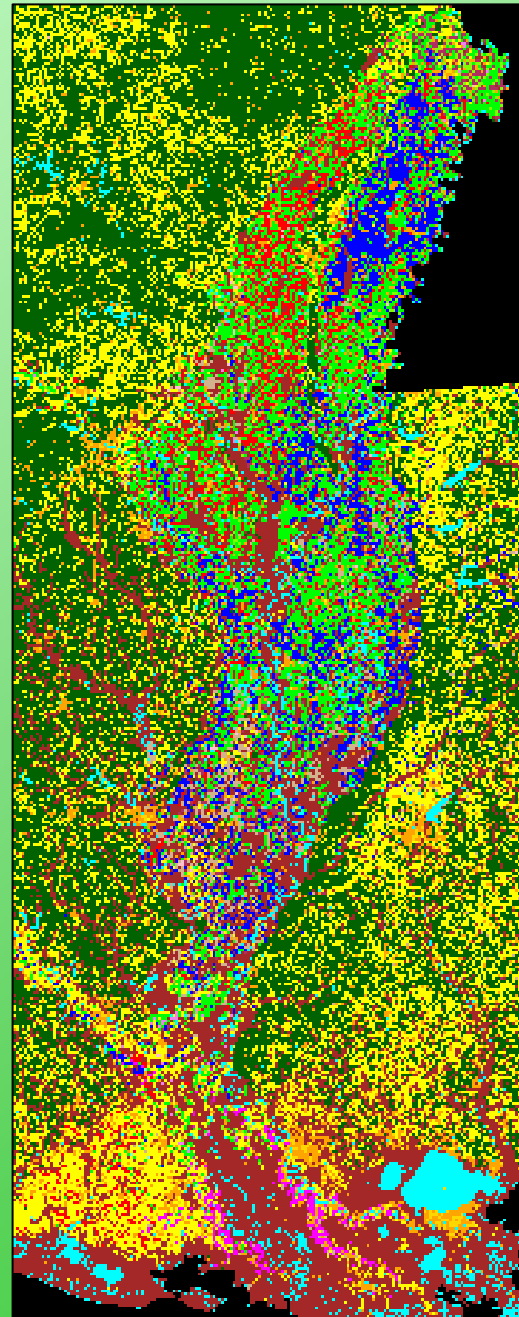


# The Cropland Data Layer Program

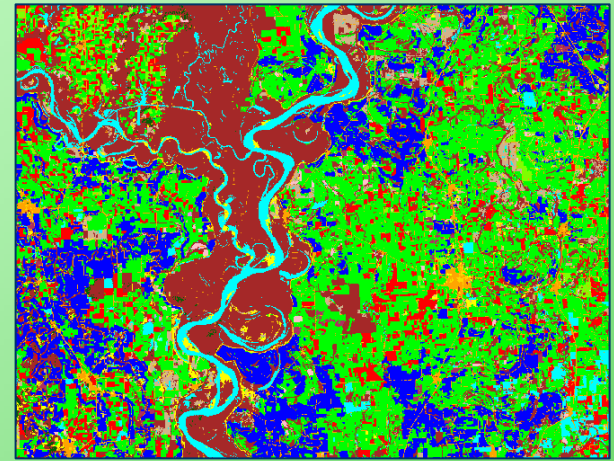


# Purpose of the Cropland Data Layer (CDL)

- Combine remote sensing imagery and NASS survey data to produce supplemental acreage estimates for the state's major commodities
- Production of a crop-specific digital land cover data layer for distribution in industry standard "GIS" format
- “Census by satellite”
  - Measurable error
  - Unbiased estimator



# CDL Program Scope



## ● Inputs

- Farm Services Agency
  - Common Land Unit
- Ancillary datasets
- Commercial software production suite
- Satellite imagery
  - AWiFS & MODIS
- NASS June Ag Survey
  - Segments

## ● Outputs

- Acreage indication at state & county level
- Public domain categorized image
- Annual product

# Commercial Software Suite

- Imagery Preparation

- Leica Geosystems ERDAS Imagine 9.1
- NLCD Extension



- Image classification

- Decision tree software
  - See5.0
  - [www.rulequest.com](http://www.rulequest.com)



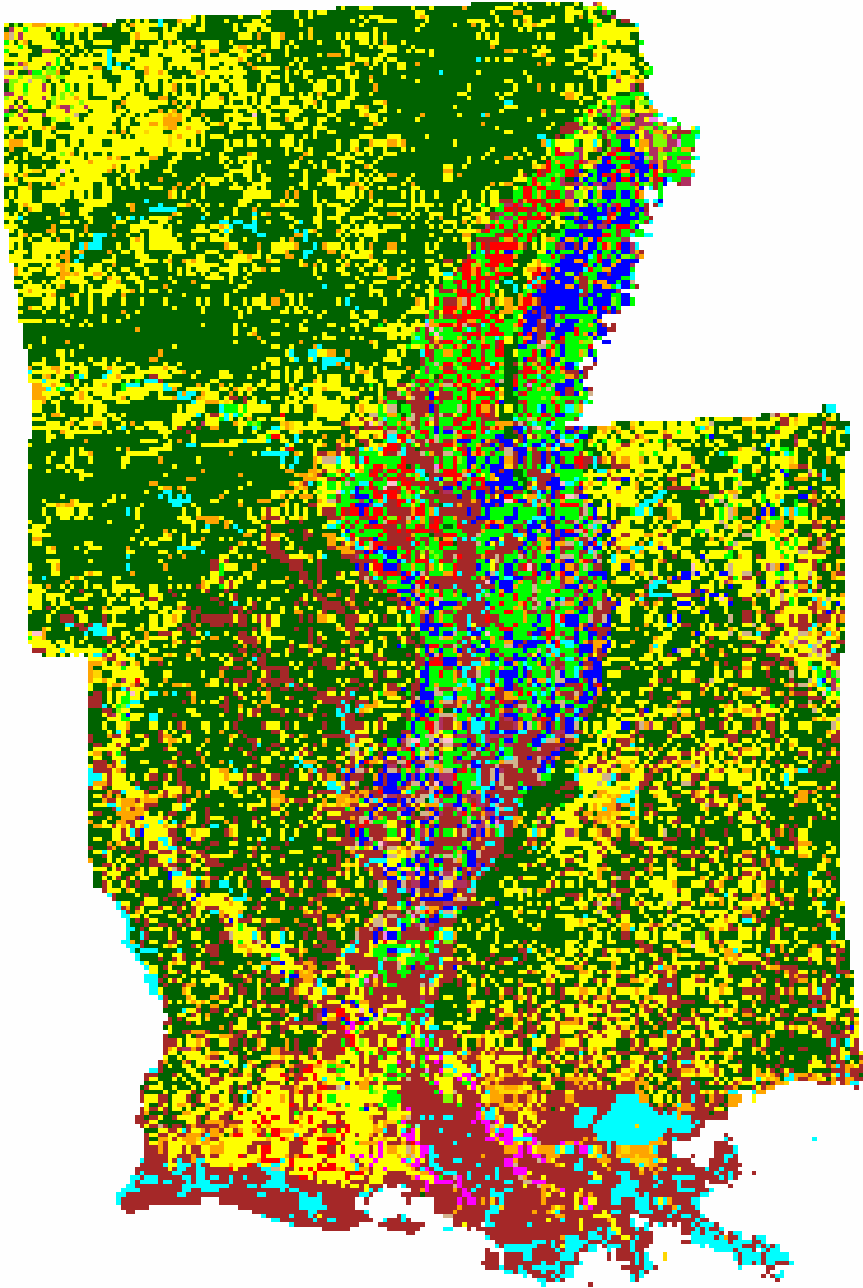
- Ground Truth Preparation

- ESRI ArcGIS 9.1





# 2006 Delta States Cropland Data Layer



## Land Use Categories



# 2007 Cropland Data Layer Coverage

